



## Dimension Customized Tunnel IQF Freezer , Rapid Cooling Quick Freeze Machine

Our Product Introduction

for more products please visit us on [coldroomunit.com](http://coldroomunit.com)

### Basic Information

- Place of Origin: China
- Brand Name: DM
- Model Number: DM-SDSD



### Product Specification

- Name: Quick Freeze Machine
- Rapid Freezing: -35°C
- Temperature Range: -40 To -18
- Dimension: Customized
- Size: Customized
- Power Consumption: Customized
- Belt Speed: 0-10m/min
- Cooling System: Direct Expansion
- Warranty: 1 Year
- Highlight: **Rapid Cooling Tunnel IQF Freezer,  
Customized Tunnel IQF Freezer,  
Rapid Cooling Quick Freeze Machine**

## Product Description

### Direct Expansion Cooling System Quick Tunnel Freezer For Accuracy -35°C Rapid Freezing

#### Product Description:

The quick-freezing tunnel is a specialized equipment designed for rapid cooling in the food, chemical, and industrial sectors. This equipment is well-suited for objects that require quick cooling, including food, daily chemical products, and industrial production.

#### Applications:

We offer rapid cooling equipment that is specifically designed for the food, chemical, and industrial industries. Our equipment is perfect for various objects that require quick cooling.

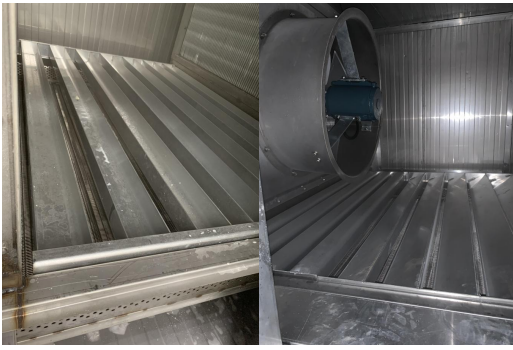
We understand that time is of the essence when it comes to cooling certain items, especially in these industries. That's why our equipment is optimized for efficiency and speed.

Whether you need to cool ingredients for food processing, chemicals for manufacturing, or industrial materials for production, our equipment can handle it all. Our state-of-the-art technology ensures that your objects are cooled quickly, preserving their quality and integrity.

Quick Freezing Tunnel Specifications					
Model	Dimensions	Belt Size	Freezing Time	Power	Weight
	(L*W*H)	(L*W)	(min)	(KW)	(KG)
AS-6-0.8	6.5X1.72X2.1	6X0.8	3-20min	6KW	3000kg
AS-9-0.8	9.5X1.72X2.1	9X0.8	3-40min	8KW	3500kg
AS-14-0.8	14.5X1.72X2.1	14X0.8	3-65min	12KW	5000kg
AS-6-1.25	6.5X2.17X2.1	6X1.25	3-20min	7KW	3500kg
AS-9-1.25	9.5X2.17X2.1	9X1.25	3-40min	10KW	4500kg
AS-14-1.25	14.5X2.17X2.1	14X1.25	3-65min	16KW	6500kg
General technical parameters					
Height of feed port from ground	900mm				
Height of frozen product	150mm				
	380V				
Exhaust pipe size	300mm				

#### Customization:

DM offers product customization services for the DM-SDSD Tunnel Blast Freezer, an instantaneous tunnel icebox that features an express cooling system and instant tunnel chiller functionality. This freezer is designed for individual quick freezing with a direct expansion cooling system. The power consumption and dimensions of the freezer can be customized to meet the client's specific needs. The DM-SDSD Tunnel Blast Freezer is made in China and is of top-notch quality.



### Packing and Shipping:

Product Packaging:

The Quick Tunnel Freezer will be securely packaged in a durable cardboard box with foam padding to prevent any damage during shipping.

All accessories and manuals will be included in the package.

Shipping:

The Quick Tunnel Freezer will be shipped via a reputable shipping carrier.

Shipping costs will be calculated based on the destination and weight of the package.

Customers can expect their package to arrive within 3-5 business days.



### FAQ:

**Q: Where is the Quick Tunnel Freezer made?**

A: The Quick Tunnel Freezer is made in China.

**Q: What is the freezing capacity of the Quick Tunnel Freezer?**

A: The freezing capacity of the Quick Tunnel Freezer varies depending on the product being frozen and other factors. Please refer to the product specifications for more information.

**Q: What is the warranty period for the Quick Tunnel Freezer?**

A: We cannot answer this question as we were instructed to exclude any warranty-related content.

## ***Product Legend***



**Zhejiang Damai Cold Chain Equipment Co., Ltd.**



86-13246760185



sales3@dmllcn.com



coldroomunit.com

Factory No. 1, Wanfeng Aviation Town, Wozhou Town, Xinchang County, Zhejiang Province