



## Cold Room Blast Freezer Evaporator Air Cooler Customized Ceiling Mounted

Our Product Introduction

for more products please visit us on [coldroomunit.com](http://coldroomunit.com)

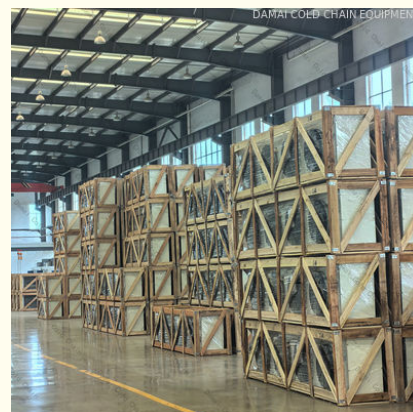
### Basic Information

- Place of Origin: China
- Brand Name: DM
- Certification: CE ISO
- Model Number: DM
- Minimum Order Quantity: 1
- Price: 1000-100000
- Packaging Details: Customization
- Delivery Time: 20day
- Payment Terms: TT, L/C
- Supply Ability: 300000/Year



### Product Specification

- Heat Transfer Efficiency: High
- Casing: Steel Plate With Plastic Spray
- Power Supply: 220V/380V/415V
- Storage: Low Temperature Storage
- Customized: Acceptable
- Temperature: High, Medium, Low Temperature
- Application: Cold Storage/Cold Room/Freezer Room
- Category: Evaporator
- Fan Quantity: 1pcs To 4 Pcs
- Air Cooler: Yes
- Capacity: 14.7KW
- Cold Room Type: Blast Freezer
- Frame: Stainless Steel Galvanized Steel



## Product Description

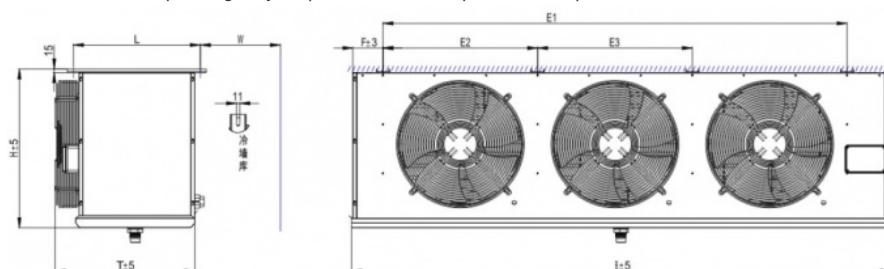
### Customizable Air Cooler Cold Room Evaporator For Your Industrial Refrigeration Needs

#### Product Description:

##### Refrigeration Capacity and Compatible Refrigerants

This series of refrigeration equipment boasts a wide range of cooling capacity, spanning from 1.2KW to 114KW. Therefore, you can choose the one that suits your needs best.

Furthermore, these refrigeration units are designed to work with different types of refrigerants. You can opt for R134a, R404A, R507A, R407C, or R22, depending on your preferences and operational requirements.



#### Features:

The product we offer is characterized by its scientific structure, high efficiency, uniform frost for safeguarding the item and lower power consumption.

For optimum performance, the product is combined with axial fan quiet models that offer a strong air flow in a long-shot range. These models are highly power-saving and have a longer life cycle. Defrosting of items is efficiently done in a short time and perfect tightness is achieved between the pipe and fin after expansion processing.

The heat exchanging coil used in our product passes the gas tightness test of up to 2.6MPa air pressure. To meet various demands, different materials like aluminum and painted stan board are used yielding a stainless electric heater with high insulating property.



#### Technical Parameters:

##### How to Choose the Right Unit Cooler Model Based on Compressor Rating and Refrigerating Capacity

When it comes to selecting the appropriate unit cooler model, several factors come into play such as the cold room temperature and the refrigerating capacity. Below are some guidelines on how to select the right unit cooler model based on the compressor rating and refrigerating capacity:

				Fan	Defrost electrothermal tube
	Nominal	Cooli			

Model	cooling capacity	ing area	Pitch of fins	Nu mb er	Dia met er	Air volu me	Wide pres sure	Ra ng e	Fan po wer	Mot er volt age	Coil (kw)	Wat er pon d(kw)	Volta ge(V )
DD-1.4/7	1400(1200 )	7	6.0	1	Ø300	1700	98(10)	8	90	380	0.9	0.4	220
DD-2.35/12	2350(2000 )	12	6.0	2	Ø300	2×1700	98(10)	8	2×90	380	1.2	0.4	220
DD-3.0/15	3000(2600 )	15	6.0	2	Ø300	2×1700	98(10)	8	2×90	380	1.35	0.45	220
DD-4.0/22	4000(3450 )	21.5	6.0	3	Ø300	3×1700	98(10)	8	3×90	380	1.8	0.6	220
DD-6.0/30	6000(5150 )	30	6.0	2	Ø400	2×3000	118(120)	12	2×216	380	2.6	1.3	220
DD-8.0/40	8000(6900 )	40	6.0	2	Ø400	2×3000	118(120)	12	2×216	380	2.8	1.4	220
DD-12.0/60	12000(10300)	60	6.0	2	Ø500	2×6000	167(17)	15	2×550	380	6.0	1.5	220
DD-15.9/80	15900(13700)	80	6.0	2	Ø500	2×6000	167(17)	15	2×550	380	7.5	1.5	220
DD-20.0/100	20000(17200)	100	6.0	3	Ø500	3×6000	167(17)	15	3×550	380	9.5	1.9	220
DD-24.0/120	24000(20650)	120	6.0	3	Ø500	3×6000	167(17)	15	3×550	380	11.0	2.2	220
DD-28.0/140	28000(24100)	140	6.0	4	Ø500	4×6000	167(17)	15	4×550	380	12	2.4	220
DD-32.1/160	32100(27600)	160	6.0	4	Ø500	4×6000	167(17)	15	4×550	380	12.5	2.5	220
DD-37.4/200A	37400(32200)	200	6.0	4	Ø500	4×6000	167(17)	15	4×550	380	13.5	2.7	220
DD-37.4/200B	37400(32200)	201	6.0	2	Ø600	2×10000	200	18	2×1100	380	15.2	1.9	220
DD-46.8/250	46800(40300)	256	6.0	3	Ø600	3×10000	200	18	3×1100	380	17.6	2.2	220
DD-56.2/310	56200(48300)	307	6.0	3	Ø600	3×10000	200	18	3×1100	380	20	2.5	220
DD-67.0/372	67000(57620)	372	6.0	3	Ø600	3×12000	240	20	3×1500	380	23	2×2.3	220

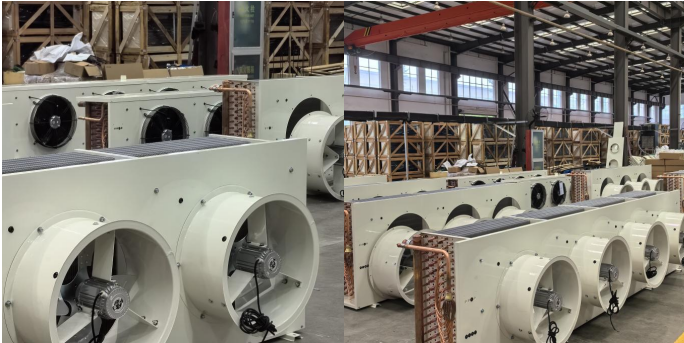
DD-81.5/450	81500(70090)	450	6.0	3	Ø700	3×15000	290	25	3×2200	380	2703	2×2.1	220
DD-99.6/530	99600(85650)	525	6.0	3	Ø700	3×15000	290	25	3×2200	380	31.2	2×2.4	220

### Applications:

Refrigeration systems are typically used in various settings that require temperature control. These settings may include large cold storages, supermarket cold storages, workshops that require refrigeration, hotel cold storages, and supporting unit condensers. In large cold storages, refrigeration systems are necessary in keeping the temperature at a required level to preserve goods such as perishable foods and medicines. Similarly, refrigeration systems are also essential in supermarket cold storages to ensure that the goods sold, such as fresh produce and dairy products, remain fresh and safe for consumption. Workshops may also require refrigeration to keep products such as chemicals and medicines from spoiling. In the hospitality industry, refrigeration systems are a must in hotel cold storages. This is to preserve food and beverages served to guests, ensuring their quality and freshness. Finally, supporting unit condensers may use refrigeration to maintain the temperature in systems such as air conditioners.

### Customization:

Our evaporators are suitable for use in cool room evaporators and are designed to deliver high performance in all environments. Order your DM cold room evaporator today and experience the difference!



### Support and Services:

The Cold Room Evaporator product technical support and services include:

- Installation assistance and guidance
- Troubleshooting and problem-solving
- Maintenance and repair services
- Product training and education
- Warranty support and claims
- Technical documentation and manuals
- Remote monitoring and diagnostics

### Packing and Shipping:

#### Product Packaging:

- 1 Cold Room Evaporator unit
- Installation and user manual
- Mounting hardware

#### Shipping:

- Ships within 3-5 business days
- Standard shipping rates apply
- Shipping available within the United States only







## FAQ:

**Q:** What certifications does the Cold Room Evaporator product have?

**A:** The Cold Room Evaporator product has CE and ISO certifications.

**Q:** What is the minimum order quantity for the Cold Room Evaporator product?

**A:** The minimum order quantity for the Cold Room Evaporator product is 1.

**Q:** What is the price range for the Cold Room Evaporator product?

**A:** The price range for the Cold Room Evaporator product is between 1000-100000.

**Q:** What are the packaging details for the Cold Room Evaporator product?

**A:** The packaging details for the Cold Room Evaporator product are customizable.

**Q:** What is the delivery time for the Cold Room Evaporator product?

**A:** The delivery time for the Cold Room Evaporator product is 20 days.


**Q:** What are the payment terms for the Cold Room Evaporator product?

**A:** The payment terms for the Cold Room Evaporator product are TT and L/C.

## Product Legend



 **Zhejiang Damai Cold Chain Equipment Co., Ltd.**

 86-13246760185

 sales3@dmllcn.com

 coldroomunit.com

Factory No. 1, Wanfeng Aviation Town, Wozhou Town, Xinchang County, Zhejiang Province