



Wall / Window Mount Cold Room Evaporator Electrical Defrosting

Our Product Introduction

for more products please visit us on coldroomunit.com

Basic Information

- Place of Origin: China
- Brand Name: DM
- Certification: CE ISO
- Model Number: DM-ZFQ
- Minimum Order Quantity: 1
- Price: 1000-100000
- Packaging Details: Customization
- Delivery Time: 20day
- Payment Terms: TT, L/C
- Supply Ability: 300000/Year



Product Specification

- Name: Cold Room Evaporator
- Heat Transfer Efficiency: High
- Casing: Steel Plate With Plastic Spray
- Customized: Acceptable
- Feature: Not Easy To Scale
- Defrosting: Electrical
- Temperature: High, Medium, Low Temperature
- Power Supply: 220V/380V/415V
- Case Material: Stainless Steel Or Steel
- Storage: Low Temperature Storage
- Mounting: Wall / Window Mount
- Cooling Capacity: 1.5-10kW
- Type: Copper Fin Type Heat Exchanger



Product Description

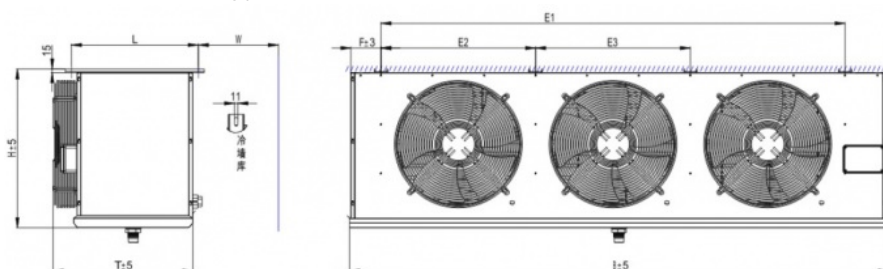
Customizable Cold Room Evaporator for Your Commercial Refrigeration Needs

Product Description:

The refrigeration capacity of this series range from 1.2KW to 114KW, and they are compatible with a variety of refrigerants, including R134a, R404A, R507A, R407C, and R22.

This series offers a diverse range of cooling capacity options to choose from, ensuring that you can find one that best suits your specific needs.

Additionally, the ability to utilize different refrigerants provides increased flexibility and compatibility with various cooling applications. With this level of adaptability to different refrigerants, this series is a great solution for a variety of industries and settings that require reliable and efficient cooling performance.



Features:

The product has been designed with several important characteristics to make it a highly efficient and effective option for your needs.

Scientific Structure: The product has a scientific structure that has been designed to ensure optimum performance.

Highly Efficient: The product is highly efficient and will ensure that it functions optimally at all times.

Frost Evenly: The product has been designed to ensure that frost is evenly spread across the surface, making it highly effective.

Power Saving: The product is designed to save power, ensuring that it offers long-term running cost benefits.

The product also boasts several other important features including:

Axial Fan: Equipped with a quiet axial fan, this product offers strong air flow in a long shot range. This aids in power saving, as well as ensuring that the product has a long life cycle.

Expansion Processing: The product has undergone expansion processing making it an ideal option for ensuring a perfect tightness between the pipe and fin.

Stainless Electric Heater: This product is also matched with a stainless electric heater that has a high insulating property, making it one of the best defrosting options on the market.

Gas Tightness Test: The heat exchanging coil has passed a gas tightness test of up to 2.6MPa air pressure ensuring that it is a highly durable and effective option for your needs.

Aluminum and Painted Stan Board: The product is made using aluminum and painted stand board, this ensures that it is versatile enough to meet your different demands.



Technical Parameters:

How to Choose the Right Unit Cooler Model According to Selected Compressor Rating Condition Refrigerating Capacity

The selection of the appropriate unit cooler model is critical to ensure efficient refrigeration of the cold room. The following guidelines should be followed:

When the cold room temperature is around 0°C, choose the unit cooler as Q.x1.0

If the cold room temperature is around -18°C, select the unit cooler as Q.x1.1

When the cold room temperature is lower than -25°C, the unit cooler should be selected as Q.x1.27

It is important that these guidelines are followed to ensure optimal refrigeration performance. If you are using R134a as refrigerant, it is advisable to increase the refrigerant capacity (Q) by 10% to 15% when selecting the unit cooler.

Model	Nominal cooling capacity	Cooling area	Pitch of fins	Fan							Defrost electrothermal tube		
				Number	Diameter	Air volume	Wide pressure	Range	Fan power	Motor voltage	Coil (kw)	Water pond(kw)	Voltage(V)
DD-1.4/7	1400(1200)	7	6.0	1	Ø300	1700	98(10)	8	90	380	0.9	0.4	220
DD-2.35/12	2350(2000)	12	6.0	2	Ø300	2×1700	98(10)	8	2×90	380	1.2	0.4	220
DD-3.0/15	3000(2600)	15	6.0	2	Ø300	2×1700	98(10)	8	2×90	380	1.35	0.45	220
DD-4.0/22	4000(3450)	21.5	6.0	3	Ø300	3×1700	98(10)	8	3×90	380	1.8	0.6	220
DD-6.0/30	6000(5150)	30	6.0	2	Ø400	2×3000	118(120)	12	2×216	380	2.6	1.3	220
DD-8.0/40	8000(6900)	40	6.0	2	Ø400	2×3000	118(120)	12	2×216	380	2.8	1.4	220
DD-12.0/60	12000(10300)	60	6.0	2	Ø500	2×6000	167(17)	15	2×550	380	6.0	1.5	220
DD-15.9/80	15900(13700)	80	6.0	2	Ø500	2×6000	167(17)	15	2×550	380	7.5	1.5	220
DD-20.0/100	20000(17200)	100	6.0	3	Ø500	3×6000	167(17)	15	3×550	380	9.5	1.9	220
DD-24.0/120	24000(20650)	120	6.0	3	Ø500	3×6000	167(17)	15	3×550	380	11.0	2.2	220
DD-28.0/140	28000(24100)	140	6.0	4	Ø500	4×6000	167(17)	15	4×550	380	12	2.4	220
DD-32.1/160	32100(27600)	160	6.0	4	Ø500	4×6000	167(17)	15	4×550	380	12.5	2.5	220
DD-37.4/200A	37400(32200)	200	6.0	4	Ø500	4×6000	167(17)	15	4×550	380	13.5	2.7	220
DD-37.4/200B	37400(32200)	201	6.0	2	Ø600	2×10000	200	18	2×1100	380	15.2	1.9	220

DD-46.8/250	46800(40300)	256	6.0	3	Ø600	3×10000	200	18	3×1100	380	17.6	2.2	220
DD-56.2/310	56200(48300)	307	6.0	3	Ø600	3×10000	200	18	3×1100	380	20	2.5	220
DD-67.0/372	67000(57620)	372	6.0	3	Ø600	3×12000	240	20	3×1500	380	23	2×2.3	220
DD-81.5/450	81500(70090)	450	6.0	3	Ø700	3×15000	290	25	3×2200	380	2703	2×2.1	220
DD-99.6/530	99600(85650)	525	6.0	3	Ø700	3×15000	290	25	3×2200	380	31.2	2×2.4	220

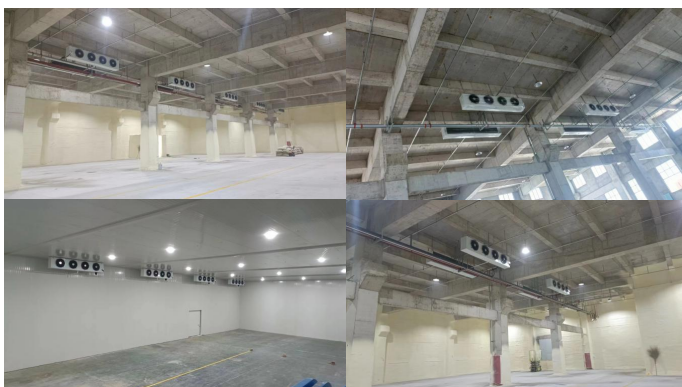
Applications:

The units are commonly utilized in a variety of facilities including large cold storage facilities, supermarkets, workshops requiring refrigeration, hotel cold storage spaces, and support unit condensers.

These units are perfect for maintaining cool temperatures in large spaces and can be used in conjunction with a variety of cooling systems.

They are especially useful in commercial settings where large amounts of temperature-sensitive products need to be kept chilled for extended periods of time.

With their versatility and durability, these refrigeration units are an essential component for any business in need of reliable cooling equipment.



This product is also known as Air Cooled Evaporator or Commercial Evaporative Air Cooler.

Support and Services:

Our Cold Room Evaporator product comes with comprehensive technical support and services to ensure optimal performance and longevity. Our team of experts is always available to provide assistance with installation, maintenance, and troubleshooting. We also offer regular maintenance services to keep your cold room evaporator running smoothly and to prevent any potential issues. In addition, we provide training and educational resources to help you better understand and utilize your cold room evaporator. With our technical support and services, you can trust that your cold room evaporator will operate at optimal efficiency and reliability.





Packing and Shipping:

The cold room evaporator is carefully packaged in a sturdy cardboard box.
The product is further protected by foam inserts to prevent any damage during shipping.
The package also includes installation instructions and necessary hardware.

The cold room evaporator will be shipped via a trusted courier service.
Shipping is available to most locations worldwide.
The estimated delivery time will vary depending on the destination, but typically ranges from 3-7 business days.
A tracking number will be provided once the product has shipped.

FAQ:

Q5: What is the minimum order quantity for this Cold Room Evaporator and what is the price range?

A5: The minimum order quantity for this product is 1 and the price range is between \$1000 and \$100000. The exact price will depend on the specific customization options required.

Q6: What are the packaging details for this Cold Room Evaporator?

A6: The packaging details for this product are customizable according to your specific requirements.

Q7: What is the delivery time for this Cold Room Evaporator?

A7: The delivery time for this product is 20 days.

Q8: What are the payment terms for this Cold Room Evaporator?

A8: The payment terms for this product are TT and L/C.

Product Legend





86-13246760185



sales3@dmllcn.com



coldroomunit.com

Factory No. 1, Wanfeng Aviation Town, Wozhou Town, Xinchang County, Zhejiang Province